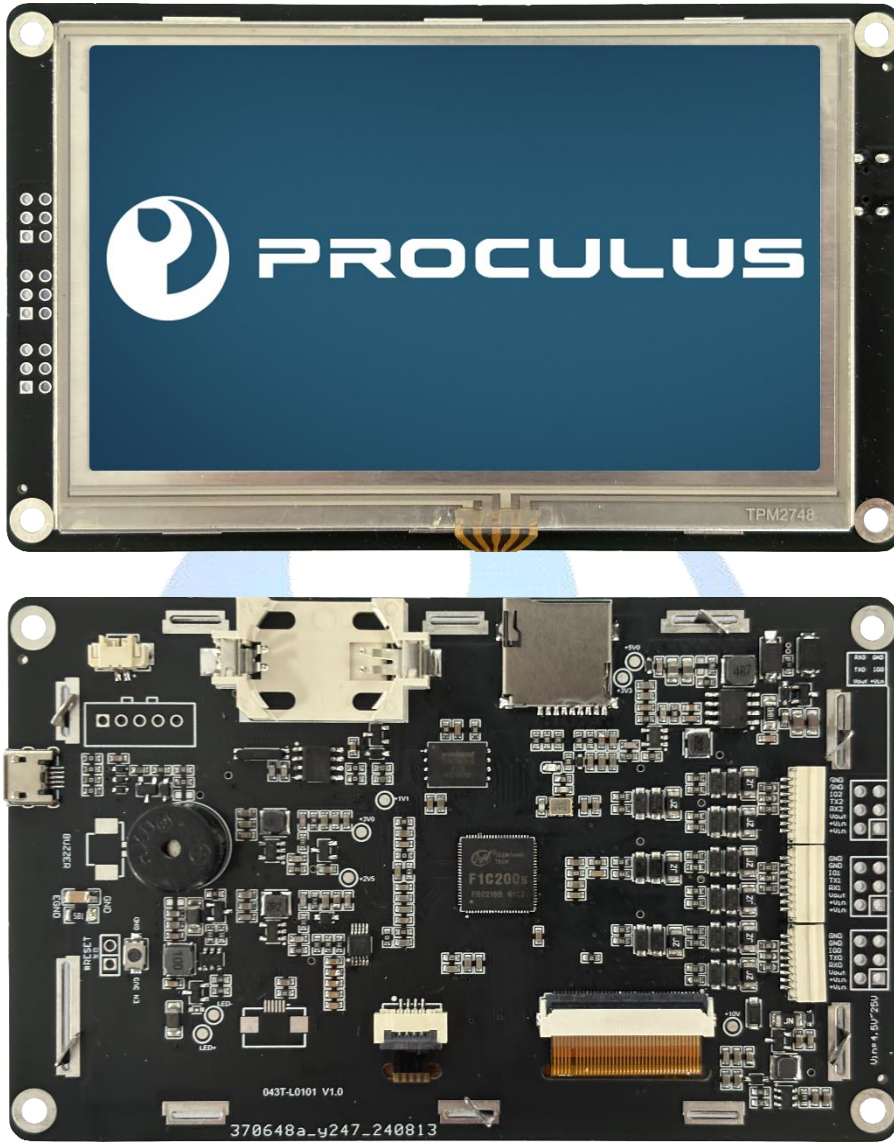


# P48272\_043T\_L0101

4.3 Inches, 480xRGBx272, 65K colors



## Modification Record

Date	Content
2024/09/05	First release

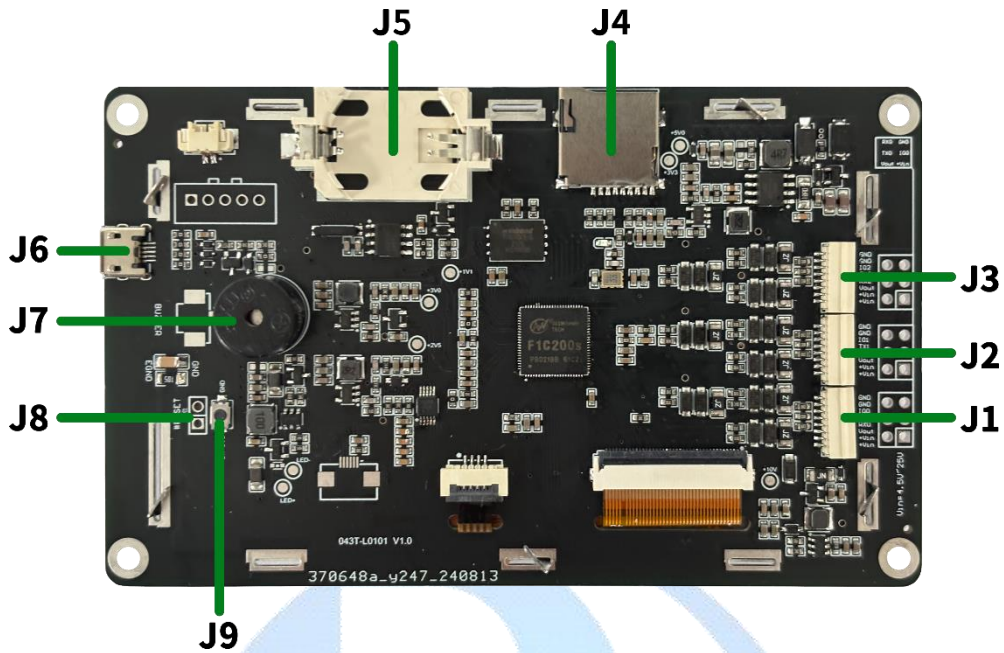
## Features

- Support wide range of power supply: Default is 4.5~25V
- Support TTL/CMOS, the max baud rate is 3,125 Mbps;
- Support hardware JPG decoding which makes storage more efficient and display quicker;
- Support offline batch download through USB Flash Drive, which improves download efficiency and reduce requirements for operators;
- Support backlight brightness adjustment and automatic standby screen saver function;
- Support multi-language font library, picture, TWO-DIMENSIONAL code display;
- Support number and English input, customizable keyboard interface;
- Support 90 degrees, 180 degrees, 270 degrees screen rotation, adjustable visual angle;
- Easy-to-use UnicView GUIs Development, no coding skills required;
- Instant operation when power on without system load time;
- Excellent electromagnetic compatibility characteristics.

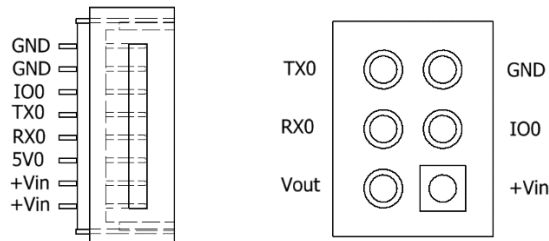


Display					
Color	65K (65536) colors, 16 bit color 5R6G5B				
Resolution	480*272, 90° rotated display (272*480)				
Brilliance	300 cd/m <sup>2</sup>				
Active area (WxH)	95.0*53.9 (mm)				
Backlight Type	3*6 chips white LED				
Voltage & Current					
Item	Min.	Typ.	Max.	Unit	Notes
Power Voltage	4.5	12	25	V	Tolerates polarity reversal.
Output voltage for peripherals (Vout or 5V0)	-	5	-	V	
Output Current for Peripherals (Iout)	-	-	25	mA	
Output voltage (TX0, TX1, TX2)	-	3.3V	-	mA	High level
	-	0	0	mA	Low level
Input voltage (RX0, RX1, RX2)	-	3.3V	15	V	High level
	-15	0	-	V	Low level
Interface					
Item	Condition	Min.	Typ.	Max.	Unit
Baud Rate	Standard	1200	—	312500	bps
Interface	TTL/CMOS				
Peripherals					
Touchscreen Panel	Resistive				
Buzzer	YES				
RTC	YES. CR2032 battery holder and 3.3V external battery connector.				
Audio	No				
Project Recording	SD Card and Serial Communication.				
Memory	128MB (total). Expandable via SD Card (FAT32) up to 32 GB.				
Other Info					
Working Temperature	-20°C~70°C				
Storage Temperature	-30°C~85°C				
Fixation	Drilling for M3 screw				
Carcass	Castless				

### Interface Description



Item	Description
1	UART0 Connector
2	UART1 Connector
3	UART2 Connector
4	SD Card Connector
5	RTC external battery connector (3V3)
6	Reserved. Not to be used
7	Buzzer
8	Connector for RESET
9	RESET button



Pin	Description	Notes
+VIN	Supply Voltage	-
5V0	Output Voltage for Perirerics	For use on accessories only
RX0	UART0 Reception	-
TX0	UART0 Transmission	-
IO0	Reserved	Do Not Connect

## DISCLAIMER

Any articles, templates, or information provided by Proculus on the website are for reference only. While we strive to keep the information up to date and correct, we make no representations or warranties of any kind, express or implied, about the completeness, accuracy, reliability, suitability, or availability with respect to the website or the information, articles, templates, or related graphics contained on the website. Any reliance you place on such information is therefore strictly at your own risk.

