

# P80600V80I\_T38

8.0 Inches, 800xRGBx600, 65K Colors, UNICView LCM



● Display

Item	Parameter	Description
Color	65K (65536) colors	16 bit color 5R6G5B
Visual Angle L/R/U/D	70° /70° /50° /70°	
Resolution	800*600	90° rotated display (600*800)
Backlight /Lifecycle/Brightness	LED/20,000 HOURS/ 800 cd/m <sup>2</sup>	
Working Temperature/ Storage Temperature	-20~+70°C/-30~+80°C	
Static ESD	±15KV	

● Voltage & Current

Item	Conditions	Min	Typ	Max	Unit
Power Voltage	-	6	12	40	V
Operation Current	VIN = 12V, Backlight on	-	380	-	mA
	VIN = 24V, Backlight on	-	200	-	mA
	VIN = 12V, Backlight off	-	80	-	mA

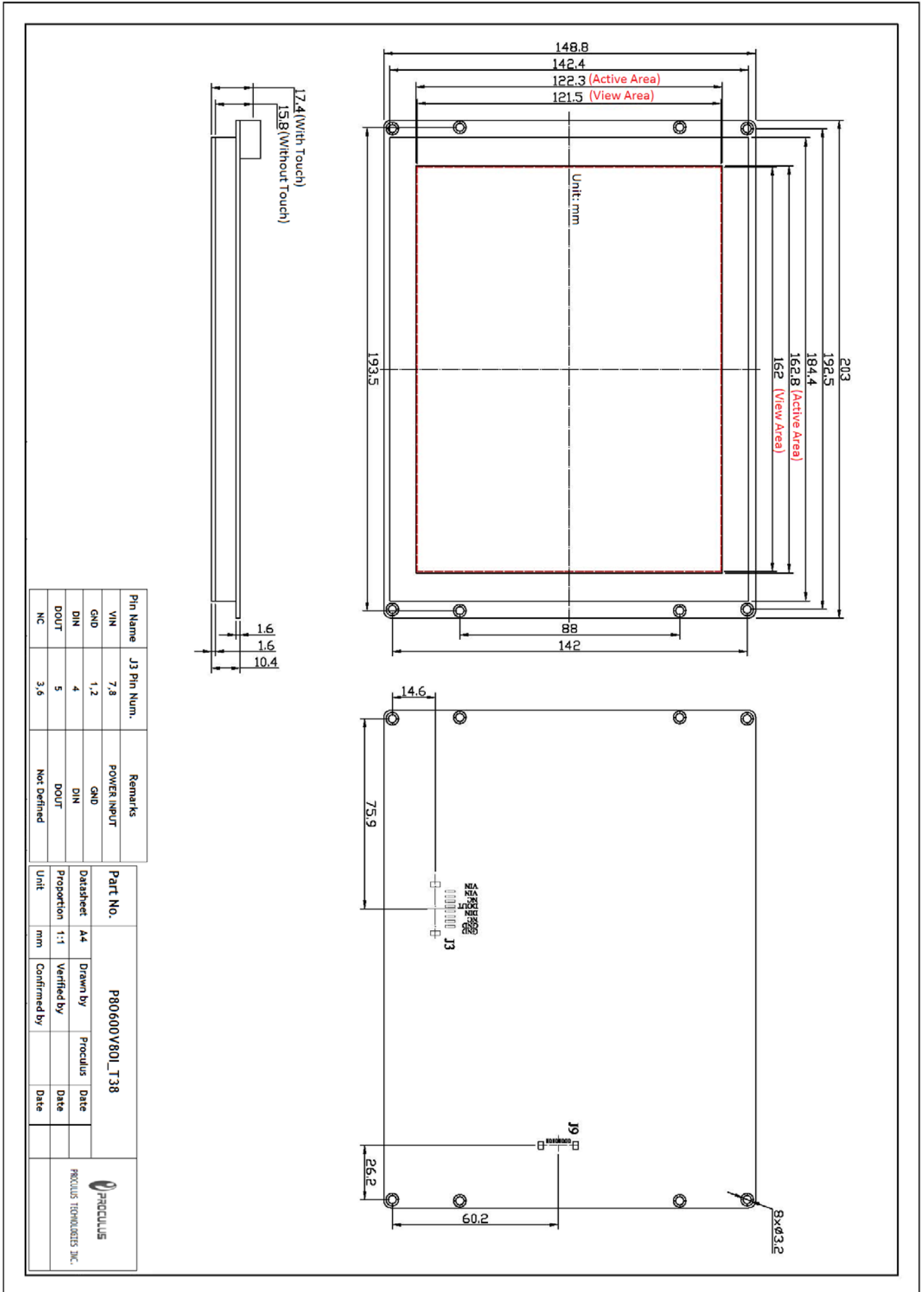
● Interface

Item	Conditions	Min	Typ	Max	Unit
Baudrate	Standard	1200	115200	892900	bps
Interface	RS-232C				
Data Format	1 byte for initial, 8 bytes for data, invalid bytes for checksum, 1 byte for end				
Socket	SMD2.0-8P with lock catch				

● Peripherals

No.	Parameter	Description	
1	Touch Screen	4-wire resistance touch screen: P80600V80I_T38	
		4-wire capacitive touch screen: P80600V80I_P38	
		No touch screen: P80600V80I_N38	
2	Buzzer	YES	
3	RTC	YES	
4	USB	YES. For downloading offline or user data copy.	External board needed for online debugging
5	USB Mini	YES. For online debugging.	
6	Audio	Support *.MP3 files. Theoretically 4096 file at maximum. Speaker power: 4 Ω 2W or 8 Ω 2W.	
7	Keyboard	Support external row keyboard (8*8 maximum).	
8	Memory	128M(support *.jpg files, maximum 65536 files theoretically), extended to 1G at maximum.	





Pin Name	J3 Pin Num.	Remarks
VIN	7,8	POWER INPUT
GND	1,2	GND
DIN	4	DIN
DOUT	5	DOUT
NC	3,6	Not Defined

Part No.		P80600V80I_T38	
Datasheet	A4	Drawn by	Proculus
Proportion	1:1	Verified by	
Unit	mm	Confirmed by	
Date		Date	
Date		Date	

PROCLUS TECHNOLOGIES INC.