

# P80480V70I\_T15B

7.0 Inches, 800xRGBx480, 65K Colors, UnicView LCM



### ● Display

Item	Parameter	Description
Color	65K (65536) colors	16 bit color 5R6G5B
Visual Angle L/R/U/D	70° /70° /50° /70°	
Resolution	800*480	90° rotated display (480*800)
Backlight /Lifecycle/Brightness	LED/20,000 HOURS/ 280 cd/m <sup>2</sup>	
Working Temperature/ Storage Temperature	-20~+70°C/-20~+70°C	
Static ESD	±15KV	

### ● Voltage & Current

Item	Conditions	Min	Typ	Max	Unit
Power Voltage	-	6	12	36	V
Operation Current	VIN = 12V, Backlight on	-	240	-	mA
	VIN = 24V, Backlight on	-	130	-	mA
	VIN = 12V, Backlight off	-	80	-	mA

### ● Interface

Item	Conditions	Min	Typ	Max	Unit
Baudrate	Standard	1200	115200	892900	bps
Interface	RS-232C & RS-485				
Data Format	1 byte for initial, 8 bytes for data, invalid bytes for checksum, 1 byte for end				
Socket	SMD2.0-8P with lock catch				

### ● Working Environment & Reliability Test

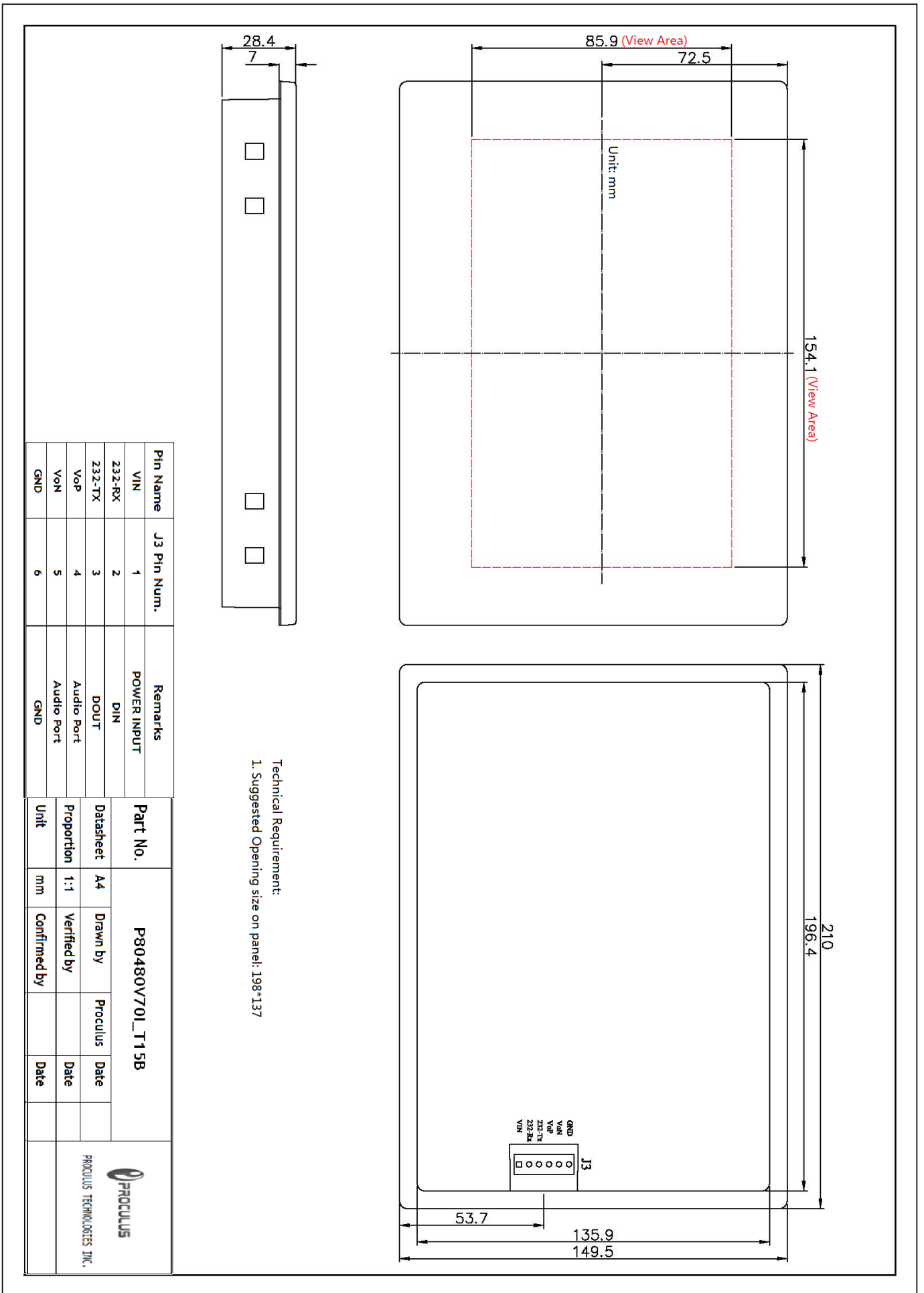
Item	Conditions	Min	Typ	Max	Unit
Working Temperature	60%RH at 12V voltage	-20	25	70	°C
Storage Temperature	-	-30	25	80	°C
Working Humidity	25°C	10%	60%	90%	RH
Aging Test	-	-	24	-	H
Protection Grade	IP65 (Front)				

### ● Peripherals


No.	Parameter	Description
1	USB	YES. For downloading offline or user data copy.
2	USB Mini	YES. For online debugging.
3	Audio	Support *.MP3 files. Theoretically 4096 file at maximum. Speaker power: 4 Ω 2W or 8 Ω 2W.
4	Keyboard	Support external row keyboard (8*8 maximum).
5	Memory	128M(support *.jpg files, maximum 65536 files theoretically), extended to 1G at maximum.
6	Others	4-wire resistive touch screen, buzzer & RTC.

### ● Installation Features

Item	Description
Case Material	ABS + PC Engineering Plastic
Case Color	Black
Dimension	210(mm)×149.5(mm)×28.4(mm)
Weight	470g
Accessories	Waterproof rubber gasket, buckles



Technical Requirement:  
 1. Suggested Opening size on panel: 198\*137

Pin Name	J3 Pin Num.	Remarks	Part No.	Dataset	Drawn by	Proculus	Date	 PROCLUS TECHNOLOGIES, INC.
VIN	1	POWER INPUT	P80480V70I_T15B	A4				
232-RX	2	DIN			Drawn by		Date	
232-TX	3	DOOUT			Verified by		Date	
VOP	4	Audio Port			Confirmed by		Date	
VON	5	Audio Port						
GND	6	GND			Unit	mm		