

P48272V43I_T39

4.3 Inches, 480xRGBx272, 65K Colors, UNICView LCM



● Display

Item	Parameter	Description
Color	65K (65536) colors	16 bit color 5R6G5B
Visual Angle L/R/U/D	70° /70° /50° /70°	
Resolution	480*272	90° rotated display (272*480)
Backlight /Lifecycle/Brightness	LED/20,000 HOURS/ 1000 cd/m ²	
Working Temperature	-20~+70°C/-30~+80°C	64 levels adjustment
Static ESD	±10KV	

● Voltage & Current

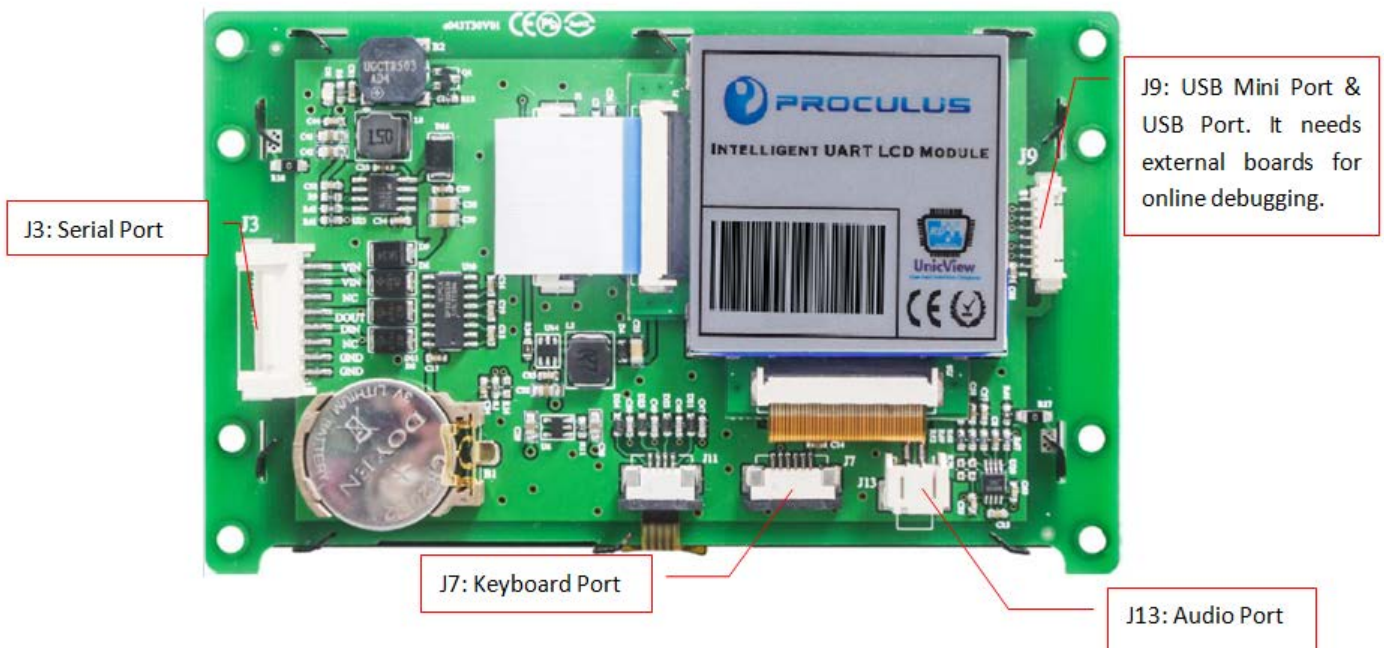
Item	Conditions	Min	Typ	Max	Unit
Power Voltage	-	6	12	40	V
Operation Current	VIN = 12V, Backlight on	-	170	-	mA
	VIN = 24V, Backlight on	-	90	-	mA
	VIN = 12V, Backlight off	-	60	-	mA

● Interface

Item	Conditions	Min	Typ	Max	Unit
Baudrate	Standard	1200	115200	892900	bps
Interface	RS232C				
Data Format	1 byte for initial, 8 bytes for data, invalid bytes for checksum, 1 byte for end				
Socket	SMD2.0-8P with lock catch				

● Peripherals

No.	Parameter	Description
1	Touch Screen	4-wire resistance touch screen: P48272V43I_T39
		4-wire capacitive touch screen: P48272V43I_P39
		No touch screen: P48272V43I_N39
2	Buzzer	YES
3	RTC	YES
4	USB	YES. For downloading offline or user data copy.
5	USB Mini	YES. For online debugging.
6	Audio	Support *.MP3 files. Theoretically 4096 file in maximum. Speaker power: 4 Ω 2W or 8 Ω 2W.
7	Keyboard	Support external row keyboard.
8	Memory	128M(support *.jpg files, maximum 65536 files theoretically)

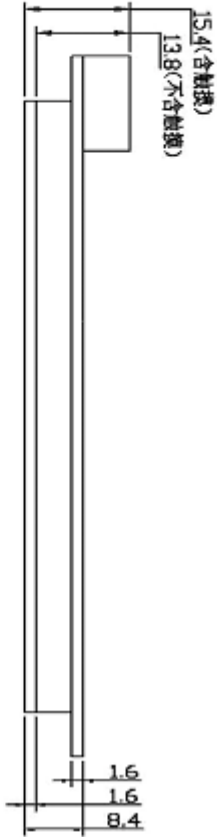
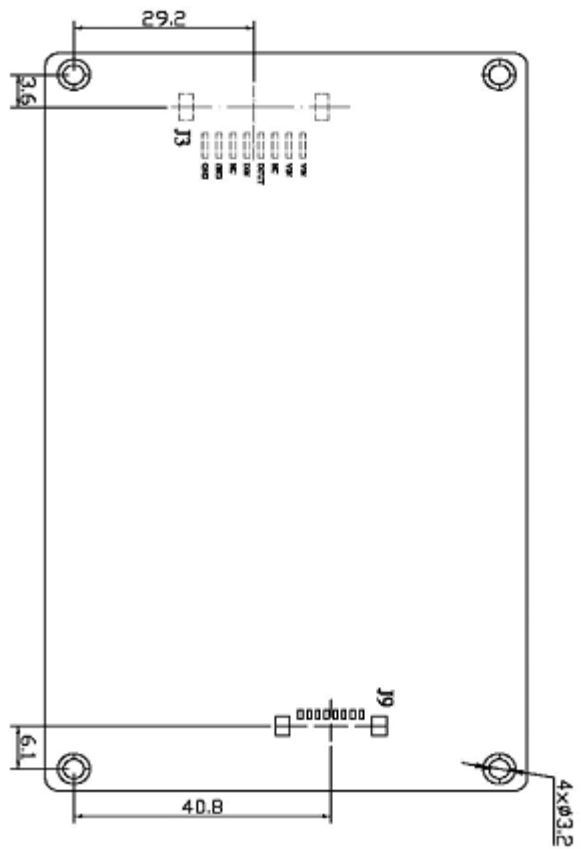
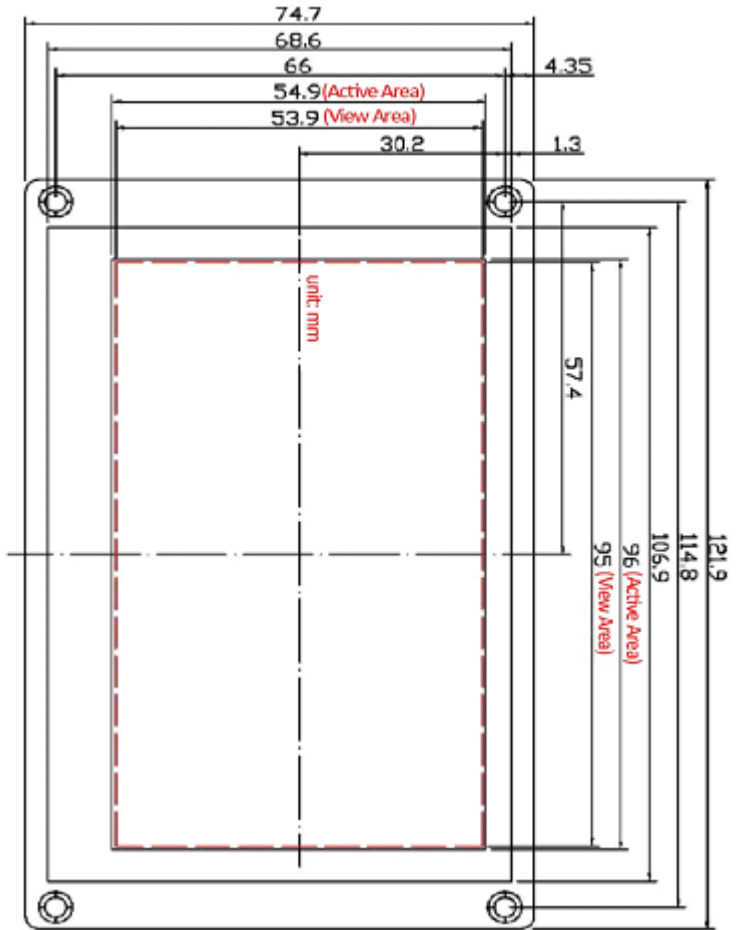


J9: USB Mini Port & USB Port. It needs external boards for online debugging.

J3: Serial Port

J7: Keyboard Port

J13: Audio Port



Pin Name	Pin Definition	Remarks
VIN	7, 8	POWER INPUT
GND	1, 2	GND
DIN	4	DIN
DOUT	5	DOUT
NC	3, 6	NOT DEFINED

Part No.		P48272V431_T39				 PROCLUS TECHNOLOGIES INC.
Datasheet	A-1	Drawn by	Proculus	Date		
Proportion	1:1	Verified by		Date		
Unit	mm	Confirmed by		Date		