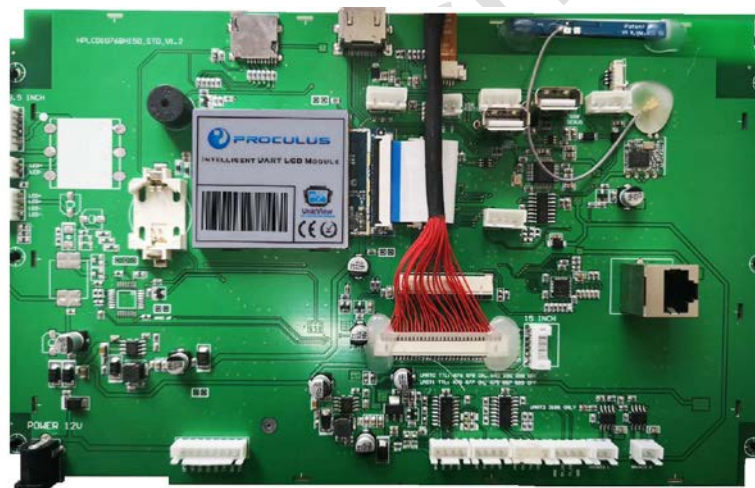


P10768MS150P_T01

15.0 Inches, 1024xRGBx768, 16.7M Colors, Android LCM



P10768MS150P_T01 is an industrial level Android LCM based on Rockchip RK3288 ARM. It is equipped with Quad-core Cortex-A17, supports most decoding solutions under 1080p@60fps, H.265/H.264/MVC/VP8 solutions under 1080p@60fps and many other great features of Rockchip RK3288. Meanwhile, with good jpeg picture processing performance and 3D GPU, it supports OpenGL ES2.0 and 1.1 OpenVG1.1.

RK3288 has high-performance external memory interface (DDR3/DDR3L/LPDDR2) capable of sustaining demanding memory bandwidths, also provides a complete set of peripheral interface to support very flexible applications.

● Core Board

Item	Parameter
CPU	1.8GHz Quad-core A17 ARM
RAM	2GB DDR3
eMMC	8GB eMMC
GPU	Mali-T764 MP4
Power Management	ACT8846 PMU

● System Version

Item	Parameter
Android	Android 5.1
Ubuntu	Ubuntu 13.09 (Default system is Android. Need to refresh firmware to choose Ubuntu. Apps need to be developed separately.)

● Display

Item	Parameter	Description
Color	16.7M (16777216) colors	24-bit color 8R8G8B
Active Area (A.A.)	304.1 mm(W)×228.1 mm(H)	1024×768
View Area (V.A.)	307.4 mm(W)×231.3 mm(H)	1024×768
Resolution	1024x768	
Backlight	LED	-
Brightness	300nit	-

● Optical Specifications

Item	Symbol	Condition	Values			Unit	Remark
			Min.	Typ.	Max.		
Viewing Angle (CR _{≥10})	θ _L	Φ=180° (9 o'clock)	65	75	-	Degree	
	θ _R	Φ=0° (3 o'clock)	65	75	-		
	θ _T	Φ=90° (12 o'clock)	65	75	-		
	θ _B	Φ=270° (6 o'clock)	65	75	-		

● Voltage & Current

Item	Condition	Min	Typ.	Max	Unit
Power Voltage		5.0	12.0	36.0	V
Operation Current	-	-	400	-	mA

Recommended power supply: 12V 3A DC

● Reliability Test

Item	Condition	Min	Typ.	Max	Unit
Working Temperature	60%RH at 12V voltage	-30	25	70	°C
Storage Temperature	-	-30	25	85	°C
Working Humidity	25°C	10%	60%	90%	RH
Protection Paint	-	-	None	-	-

● Interface

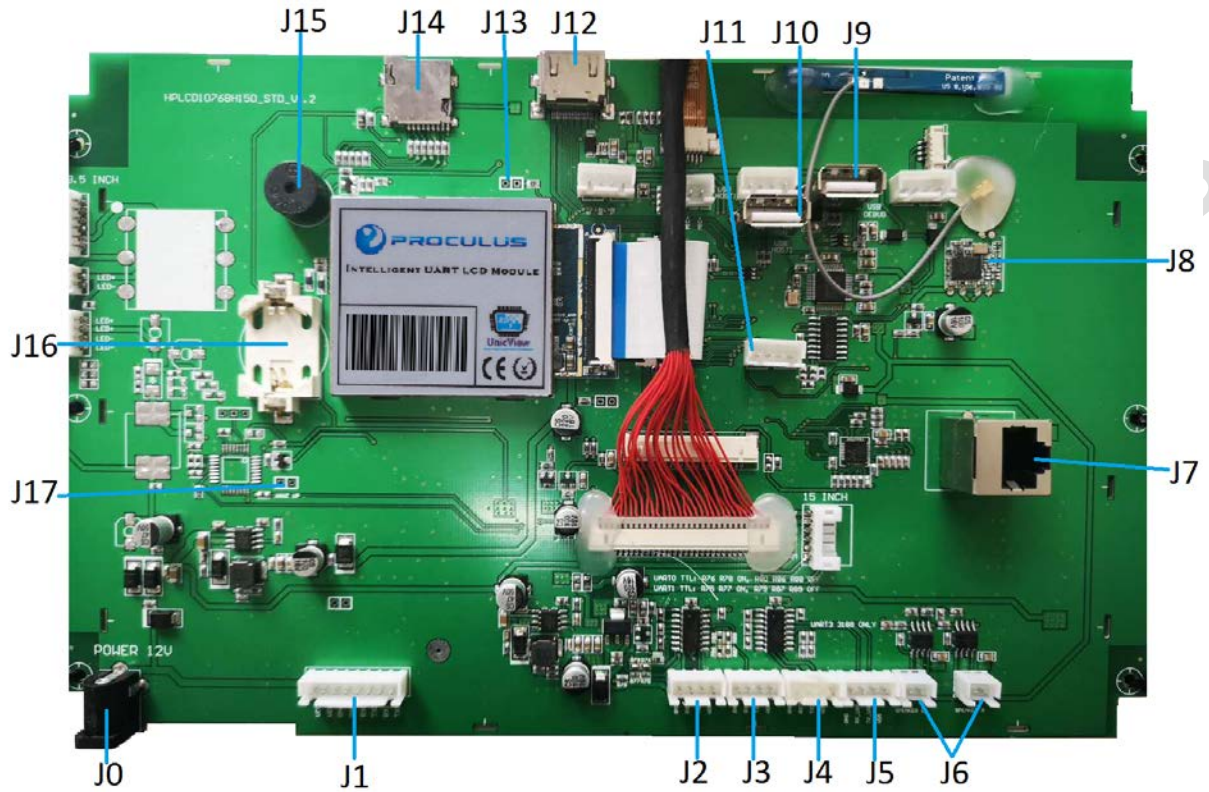
Item	Condition	Min	Typ.	Max	Unit
Baudrate	Standard	1200	115200	115200	bps
	User Defin	1200	-	115200	bps
Serial Mode	Serial Port*4 (defaulted interface RS232). 2 of them support TTL.				
User Interface	Standard serial communication protocol. 4Pin_2.54mm socket.				
USB	USB DEBUG*1. USB HOST*2				

Ethernet	Support 802.11b/g/nWIFI wireless network. Support 10m/100m Ethernet
----------	---

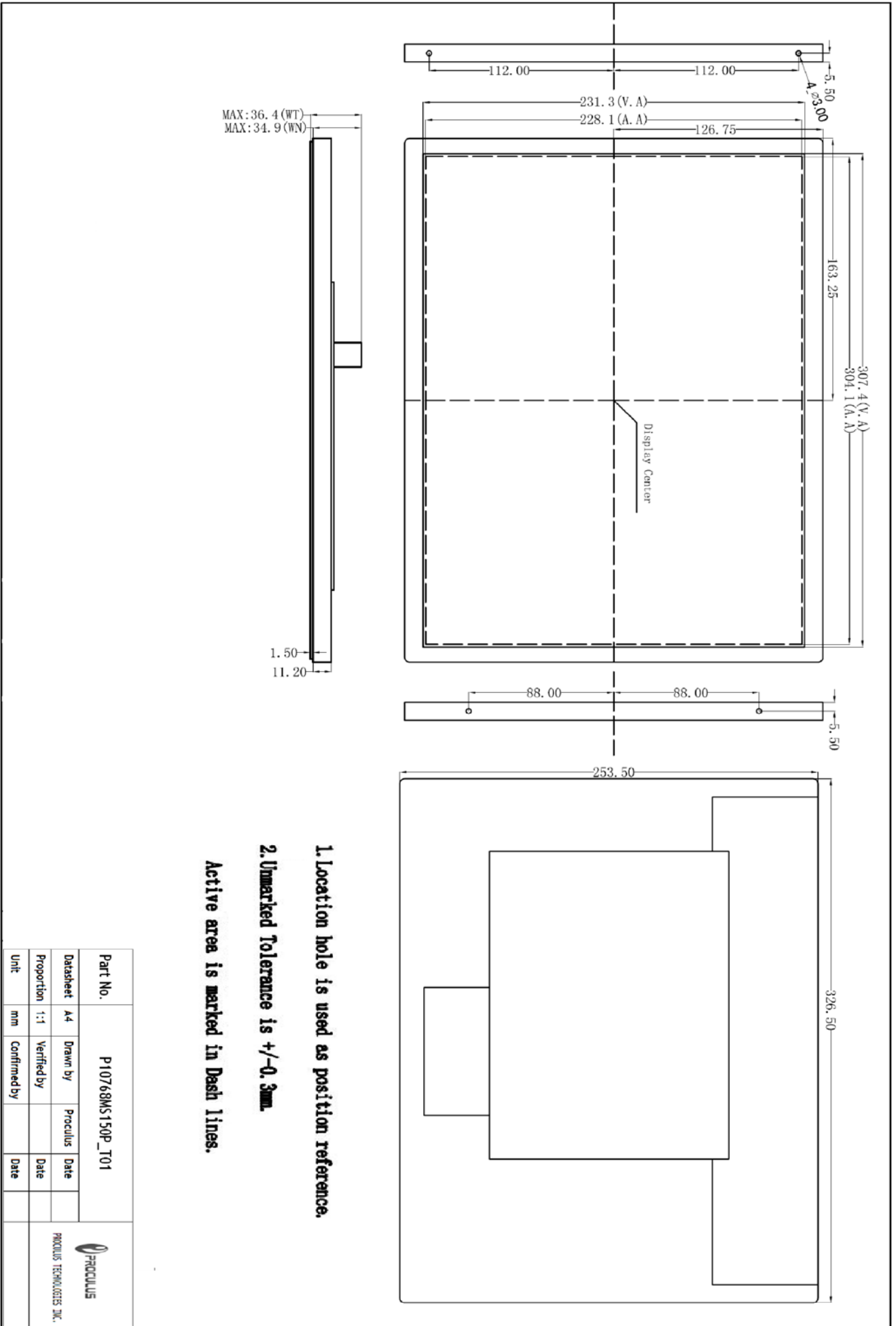
- Peripherals

Peripherals	Microphone interface. 2-channel 4 Ω /3W loudspeaker.
-------------	--

- Interface Description



Num.	Interface Name	Description
J0	Power	12V3A power supply
J1	Power	Same as J0
J2	Serial port 0	Device name: ttyS0. Support RS232/TTL. Pin definition: GND, RX, TX, VCC
J3	Serial port 1	Device name: ttyS1. Support RS232/TTL. Pin definition: GND, RX, TX, VCC
J4	Serial port 3	Device name: ttyS3. Pin definition: GND, RX, TX, VCC (Not Available in RK3188)
J5	USB-serial interface	Device name: ttyCOM0. Pin definition: GND, RX, TX, VCC
J6	Loudspeaker	Support 4W output
J7	RJ45 interface	Support 10M/100M network
J8	Wireless network	Support IEEE802.11b/g/n network. Support wireless & Bluetooth 2-in-1.
J9	USB DEBUG	App debugging interface. Firmware upgrade interface
J10	USB1	Support USB Peripherals
J11	USB2	Support USB Peripherals
J12	HDMI	
J13	RECOVERY	Short-circuit to enter firmware burning mode
J14	TF card	
J15	Buzzer	
J16	RTC	
J17	Wake-up	



Part No.	P10768MS150P_T01			 PROCLUS TECHNOLOGIES INC.
Datasheet	A4	Drawn by	Proclus	
Proportion	1:1	Verified by		Date
Unit	mm	Confirmed by		Date