

P10600V70C_T41

7.0 Inches, 1024xRGBx600, 65K Colors, UNICView LCM



● Display

| Item | Parameter | Description |
|---------------------------------|---|--------------------------------|
| Color | 65K (65536) colors | 16 bit color 5R6G5B |
| Visual Angle L/R/U/D | 80° /80° /60° /70° | |
| Resolution | 1024*600 | 90° rotated display (600*1024) |
| Backlight /Lifecycle/Brightness | LED/20,000 HOURS/ 350 cd/m ² | |
| Working Temperature | -20~+70°C/-30~+80°C | 64 levels adjustment |
| Static ESD | ±14KV | |

● Voltage & Current

| Item | Conditions | Min | Typ | Max | Unit |
|-------------------|--------------------------|-----|-----|-----|------|
| Power Voltage | - | 6 | 12 | 35 | V |
| Operation Current | VIN = 12V, Backlight on | - | 250 | - | mA |
| | VIN = 24V, Backlight on | - | 140 | - | mA |
| | VIN = 12V, Backlight off | - | 80 | - | mA |

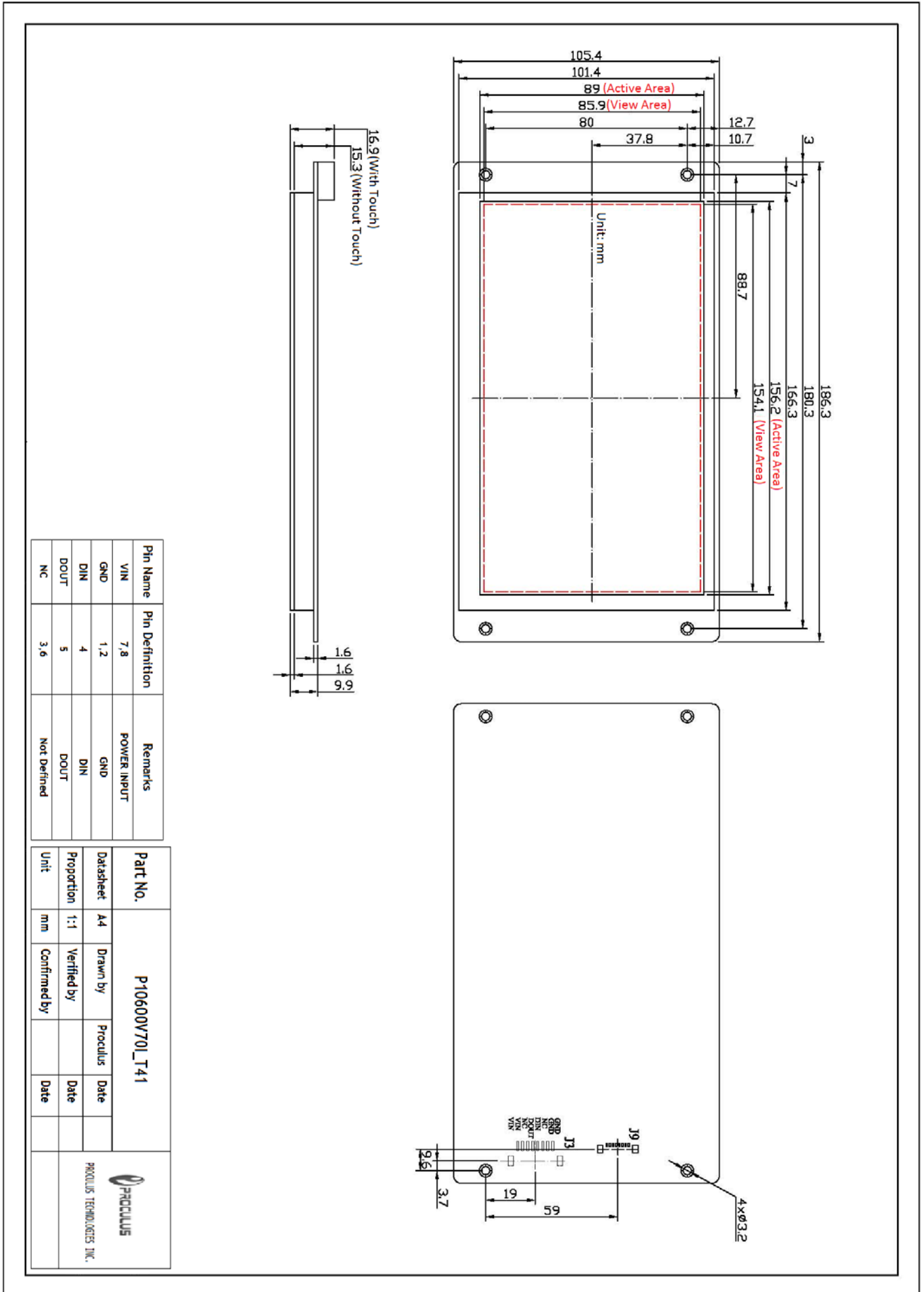
● Interface

| Item | Conditions | Min | Typ | Max | Unit |
|-------------|--|------|--------|--------|------|
| Baudrate | Standard | 1200 | 115200 | 892900 | bps |
| Interface | RS-485 | | | | |
| Data Format | 1 byte for initial, 8 bytes for data, invalid bytes for checksum, 1 byte for end | | | | |
| Socket | SMD2.0-8P with lock catch | | | | |

● Peripherals

| No. | Parameter | Description |
|-----|--------------|--|
| 1 | Touch Screen | 4-wire resistance touch screen: P10600V70C_T41 |
| | | 4-wire capacitive touch screen: P10600V70C_P41 |
| | | No touch screen: P10600V70C_N41 |
| 2 | Buzzer | YES |
| 3 | RTC | YES |
| 4 | USB | YES. For downloading offline or user data copy. |
| 5 | USB Mini | YES. For online debugging. |
| 6 | Audio Port | Support *.MP3 format. No time limit for single file. Theoretically 4096 files at maximum. Loudspeaker: 8 Ω 2W. |
| 7 | Memory | 128M(support *.jpg files, maximum 65536 files theoretically), extended to 1G at maximum. |





| Pin Name | Pin Definition | Remarks |
|----------|----------------|-------------|
| VIN | 7, 8 | POWER INPUT |
| GND | 1, 2 | GND |
| DIN | 4 | DIN |
| DOUT | 5 | DOUT |
| NC | 3, 6 | Not Defined |

| Part No. | | P10600V70C_T41 | | PROCLUS TECHNOLOGIES INC. | |
|------------|-----|----------------|---------|---------------------------|--|
| Datasheet | A4 | Drawn by | Proclus | Date | |
| Proportion | 1:1 | Verified by | | Date | |
| Unit | mm | Confirmed by | | Date | |